



# RICE GROWING OUTLOOK REPORT

---

SEPTEMBER 2023





## Rice Growing Outlook Report

September, 2023

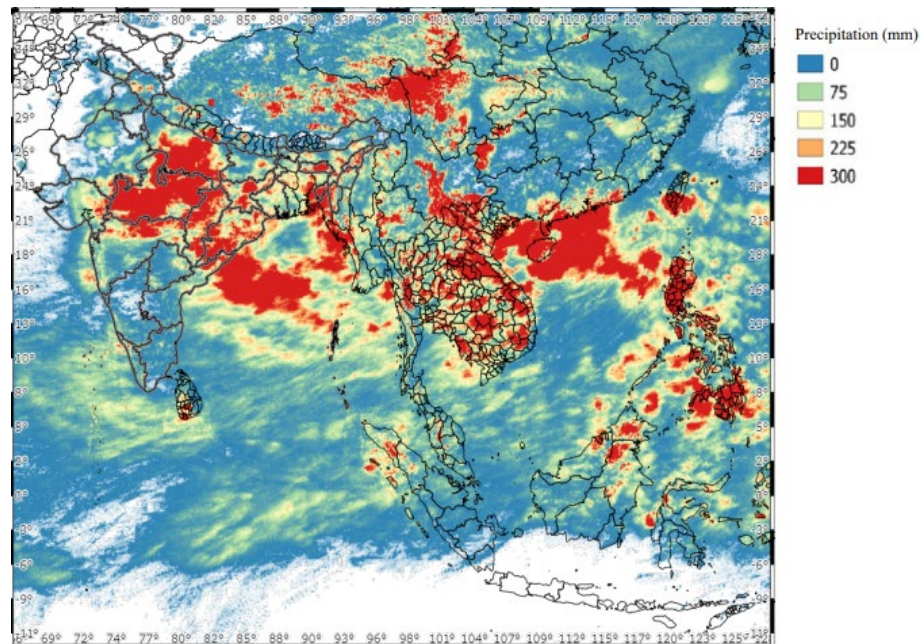
---

### Overview

In the Northern side of SE-Asia, the wet season rice is in the growing stage to harvesting stage. This season's weather is generally showing drought trends, but the impact on rice growing is small and it is not expected that there will be a significant decrease in yield with the exception of Thailand. In Thailand, a significant reduction in planted area is expected due to water shortage, as well as a decrease in yields due to drought damage.

In the Southern side of SE-Asia (Indonesia), the planting of dry season rice has almost completed. The total planted area is 4.3 million hectares. On the other hand, the harvesting of dry season rice is in its peak season. The yield is fair despite the less precipitation during the growing condition.

### Precipitation condition in early September



This map is provided by the Indian Space Research Organisation (ISRO) under the APRSAF/SAFE agromet project

<https://www.eorc.jaxa.jp/SAFE/project/agromet>

## Cambodia

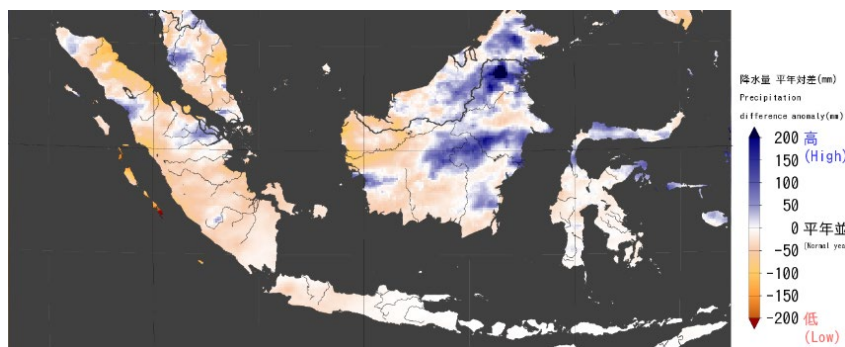
The final planted area of wet season rice reached around 2.74 million hectares, 104% of the national plan. While the early rice of the wet season is in the harvesting stage and harvesting has progressed to 48% of the planted area. The current yield is 4.2 tons per hectare. The weather during this season continued the drought trend, but the rice grow condition is recovering due to nationwide rain this month.

## Indonesia

The planting of dry season rice has almost completed. The total planted area is 4.3 million hectares, 5.3% lower than last year due to less precipitation and farmer delays in planting. This lack of irrigation water conditions seems to be recovered by the creation of an irrigation system using pumps from water wells or irrigation channels.

This September is the third month of dry season rice harvest, the total harvested area so far is 2.5 million hectares, 4.1% lower than last year. The yield is fair despite the less precipitation during the growing condition.

This September will enter the dry season in most southern parts of Indonesia. In the northern part dryness condition seems normal and the irregular low intensity rainfall still continues. Drought as the impact of moderate El Nino is predicted to hit most of part of Indonesia until November with very low rainfall and below normal precipitations. There is some drought damage but no cause of significant damage to rice growing so far.



JASMAI Precipitation difference anomaly map: The impact of moderate El Nino is predicted to hit most of part of Indonesia until November with very low rainfall and below normal precipitations

## Laos

The wet season rice of the lowland is in the young panicle forming stage to grain filling stage. The irrigation water supply in this season is generally good for the paddy field due to enough rain for all regions. In the second half of last August, some paddy fields were hit by floods but no damage has been reported.

The upland rice is also in the young panicle forming stage to grain filling stage under good growing conditions. Some small areas in the North are affected by pest outbreaks but the damage is not serious.

## Myanmar

In this month, planting of the wet season rice has almost completed with 5.7 million hectares. It is suggested that the monsoon rain favored the planting work of this wet season rice. The planting progress is slightly faster than last year.

The monsoon floods were caused in some river basin areas during this month, it is reported that about 32 thousand hectares of planted areas have been affected by the floods and over 15 thousand hectares have been damaged. Replanting has been operated for those damaged fields. Most of the planted wet season rice is now at the panicle formation stage to maturity stage and overall growing condition is good due to enough monsoon rain.

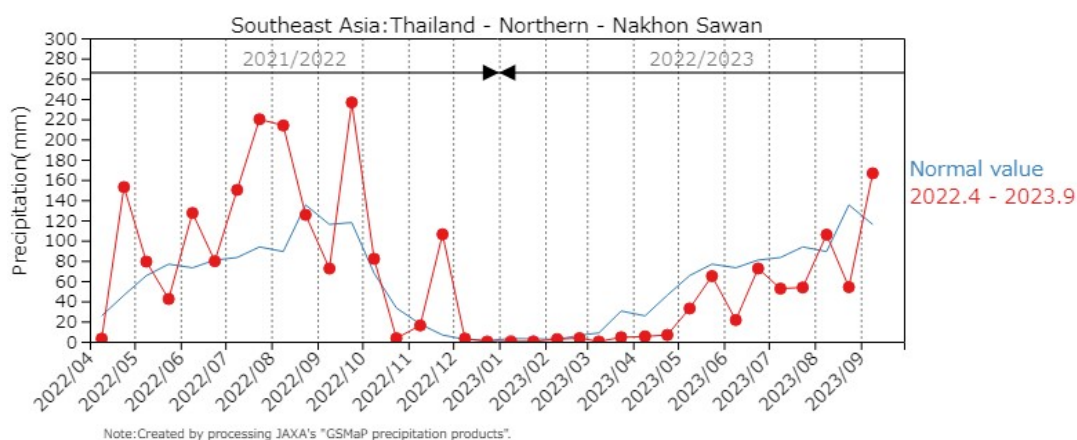
## Philippines

Wet season rice planted from April to May was fully harvested. Production is slightly lower compared to the same period of rice last year because of the damage by the passage of three tropical cyclones and the enhanced southwest monsoon. Wet season rice planted from July to August is in the tillering stage. Southwest monsoon, low pressure area, and three tropical cyclones are expected to affect the country.

For now, the crop growing condition of wet season rice is fair to good in most parts of the country.

## Thailand

Wet season rice is in the young panicle forming stage. Now the planted area is approximately 60% of the total expected planting area and it is forecast to decrease due to nationwide small rainfall 20% below normal. Moreover, this drought condition continued in many areas until the end of August. The growing condition of wet season rice is poor from drought and an estimated 70,000 hectares will be damaged. As a result, it is expected that yield and total production will be decreased compared to last year.



JASMAI Precipitation Graph (Nakhon Sawan): This drought condition continued in many areas until the end of August

## **Vietnam**

In the North, the wet season rice is in the young panicle forming to grain filling stages. The rice-growing condition is good due to better irrigation preparation.

In the South, the summer-autumn rice is in the harvesting stage. The yield of rice is the same as last year, which is about 5.7 tons per hectare. In addition, the other wet season rice (autumn-winter rice and seasonal rice) is in the growing stages under good growing conditions.

\*JASMAI is an open and free system

<https://jasmai.maff.go.jp/en/>